

Share ▾

Child Passenger Safety Team Colorado News

[View this email in your browser](#)



**CHILD PASSENGER SAFETY**  
**COLORADO**

## CPS Team Colorado Newsletter

### January, 2015

#### Contact Information for South Metro Safety Foundations, CPS Training

**Coordinator:** South Metro Safety Foundation is thrilled to work with you this contract year. We are always available to answer your questions and can be reached directly at [carseat@southmetrosafetyfoundation.org](mailto:carseat@southmetrosafetyfoundation.org), 303-805-0228. [To read more about the foundation, click here.](#)

**CHILD PASSENGER SAFETY**  
**COLORADO**

303-239-4537  
Cart: 0

**RESOURCE CENTER**

Home | Order Online | Re-certification | About | More

Physical Resources | Intellectual Resources

**CAR SEAT**

[Visit The New Resource Center for CPS Resources](#)

## Latest Recall Information

Need a recall list?

[UNC Safety Research Center List](#)

[NHTSA SaferCar List](#)

## Upcoming Webinars

Webinar opportunities with information addressing needs in our state:

[Safety in Children with Special Needs Webinar](#)

[Safe Kids and State Farm Manufacturer Webinars](#)

## Car Seat Technology

- [Locking Clips No Longer Standard Issue](#): Both Evenflo & Dorel have recently decided to exclude the locking clip on their carseats. Why? Because parents misuse them more often than they actually need to install their carseat using one. In other words, the locking clips were more often part of the problem rather than part of the solution. Retail models of Evenflo convertible and combination carseats now come with a statement attached to the harness alerting consumers to the change and providing information on who to call if you really do need a locking clip. You can also buy a locking clip from a local baby store or even use one that you took off a different carseat. Locking clips are the ONLY component that you can swap from seat to seat, even across brands. Evenflo infant seats and institutional models sold to CPS programs will continue to come with locking clips.
- [New Vehicle Airbag](#): TRW Automotive has unveiled plans for a new rear seat airbag which will be available in late 2017. The airbag was announced at the Airbag 2014 Symposium in Karlsruhe, Germany. The advanced rear seat technologies showcased by TRW at the Airbag 2014 Symposium, included Roof-mounted rear airbag concept which is specifically designed for the rear seats. The roof-mounted rear airbag is used in combination with a seatbelt equipped with a retractor pretensioner and single constant load limiter. Read more about their airbag online and on the TRW website. Read more about pretensioners and load limiters in a report from NHTSA.

**Congrats to Michelle Pemberton! Michelle was the random recipient of the fourth quarter of 2014 Amazon Gift Card drawing for reporting car seat data. Thank you Michelle! Providing your data helps our state provide you with resources and training: [Report Your Car Seat Data](#).**

## KIM Conference Scholarships



### KIM CONFERENCE

#### 2015 Scholarships

Funding available via KIDZINMOTION to provide scholarships to the 2015 KIDZINMOTION National CPS Conference. This year, KIM Conference will be held in Orlando, Florida.

To apply, simply fill out the Scholarship Form on [www.kidzinmotion.org](http://www.kidzinmotion.org).

These scholarships cover only the registration fee (\$350 value). All other expenses must be assumed by the attendee. Also note that you MUST be certified for over 2 years to qualify.

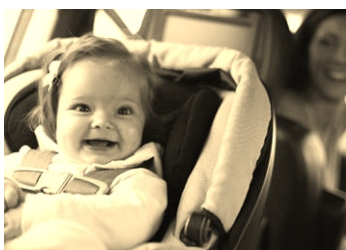


### CPS Tech Talk

Ways to connect with child passenger safety on a social media level.

- [CPS Team Colorado](#)
- [Car Seats for the Littles](#)
- [The Car Seat Lady](#)

## Nearly 1/4 of Parents Report Turning their Child Forward Facing Before One Year of Age



The U-M researchers asked parents about when they transitioned their child to a forward-facing seat in two national surveys – one in 2011, one month after the new guidelines were published and again in 2013. This research was conducted as part of the C.S. Mott Children's Hospital National Poll on Children's Health. In 2011, 33% of parents of 1-to 4-year-old children who had been turned to face forward had done so at or before 12 months. Just 16% reported turning their child's seat at 2 years or older. But in 2013, 24% of parents of 1- to 4-year-old children who had been turned to face forward made the switch at or before 12 months. Only 23% reported waiting to turn until the child was 2 years old or older.

## Training

### NATIONAL CHILD PASSENGER SAFETY CERTIFICATION

A Program of Safe Kids Worldwide

[Click here](#) to register for upcoming training or call 303-805-0228.

#### Initial Certification Training

##### Courses

Dates	Location
January 15, 22, 29	Centennial, CO
March 30-April 1 2015	Boulder, CO

##### CEU Refresher Courses

Date	Location
January 23, 9am-5pm	10201 Cty Rd 69.3, Trinidad, CO 81082
February 3 + 4	Arvada, CO
February 19	Co Springs, CO
February 27	Castle Rock, CO
April	Durango, CO
May	Northwest Colorado
June	Sterling, CO

##### Renewal Courses 2015

Dates	Location
February 4	Arvada, CO

[Full article.](#)

**What do I need to recertify?** Your CPS certification will need to be renewed every two years. Technicians and Instructors are required to successfully complete the recertification process before their current certification expires. [Click here for a detailed recert checklist.](#)

**Need to earn online CEUs?:** [Click here for online CEUs and Quizzes.](#) After earning your CEU, [log in](#) to your CPS Online Profile, click on Recertification Activities and follow prompts to enter the CEU under "Category 4: Online/Web Sessions."

---

**Connect With Your District Representative**

*2014 South Metro Safety Foundation*

**Our email address is:**

[carseat@southmetrosafetyfoundation.org](mailto:carseat@southmetrosafetyfoundation.org)

**Our office number is:**

[303-805-0228](tel:303-805-0228)